

Drain: RUSSELL JOHNSON **Drain #:** 263
Improvement/Arm: 116TH ST RECONSTRUCTION
Operator: J. LIVINGSTON **Date:** 2-5-04
Drain Classification: Urban/Rural **Year Installed:** 2002

GIS Drain Input Checklist

- Pull Source Documents for Scanning SLM/jwj
- Digitize & Attribute Tile Drains _____
- Digitize & Attribute Storm Drains
- Digitize & Attribute SSD _____
- Digitize & Attribute Open Ditch _____
- Stamp Plans _____
- Sum drain lengths & Validate
- Enter Improvements into Posse
- Enter Drain Age into Posse
- Sum drain length for Watershed in Posse
- Check Database entries for errors

**Gasb 34 Footages for Historical Cost
Drain Length Log**

Drain-Improvement: RUSSELL JACKSON - 116TH ST. RECONSTRUCTION

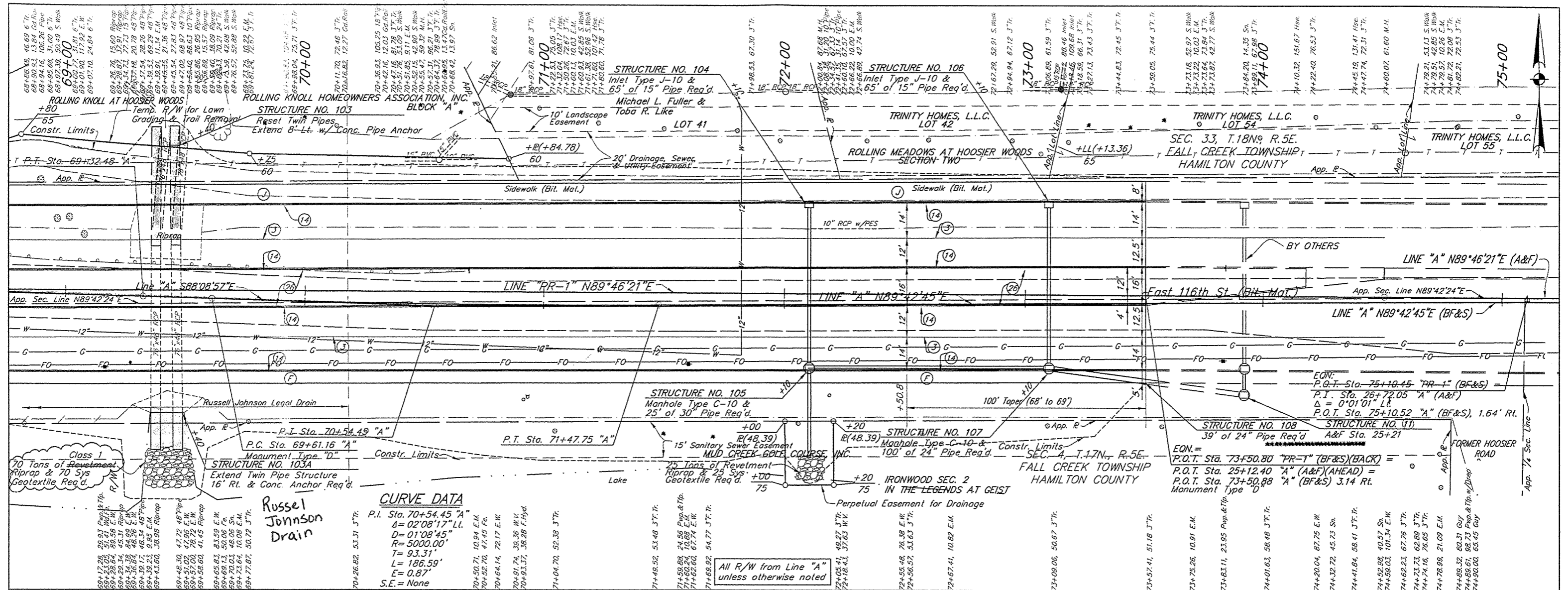
Drain Type:	Size:	Length	Length (DB Query)	Length Reconcile	If Applicable	
					Price:	Cost:
ERCP	2x 48" x 72"	121'	121'		182 ⁰⁰ /lf	44,092 ⁴⁰

Sum: 121' 121' \$44,092⁴⁰

Final Report: N/A

Comments:

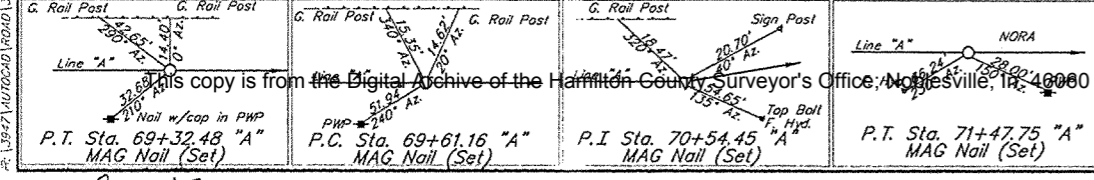
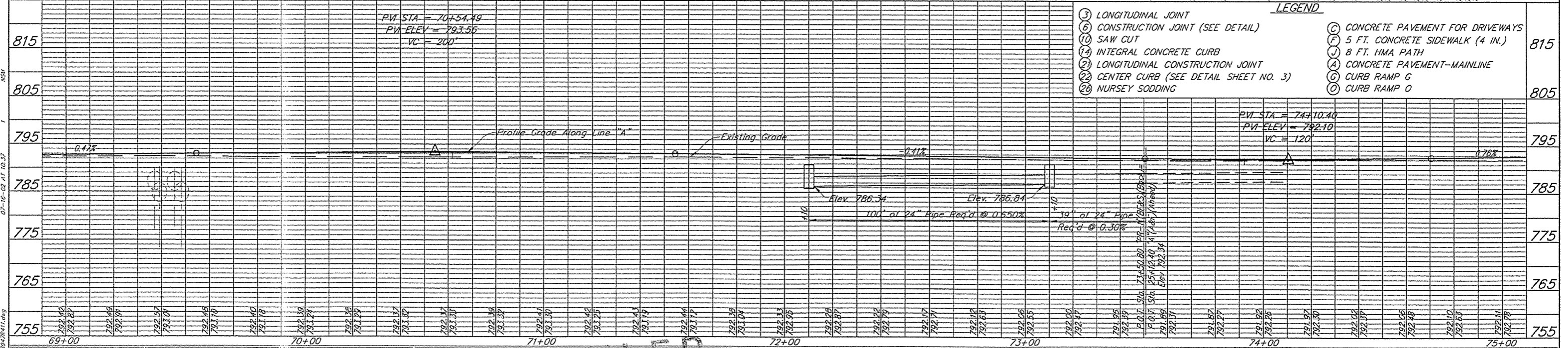
SCALED LENGTH IN GIS



CURVE DATA
 P.I. Sta. 70+54.45 "A"
 Δ = 02°08'17" Lt.
 D = 01°08'45"
 R = 5000.00'
 T = 93.31'
 L = 186.59'
 E = 0.87'
 S.E. = None

All R/W from Line "A" unless otherwise noted

- LEGEND**
- ③ LONGITUDINAL JOINT
 - ⑥ CONSTRUCTION JOINT (SEE DETAIL)
 - ⑩ SAW CUT
 - ⑭ INTEGRAL CONCRETE CURB
 - ⑰ LONGITUDINAL CONSTRUCTION JOINT
 - ⑲ CENTER CURB (SEE DETAIL SHEET NO. 3)
 - ⑳ NURSEY SODDING
 - Ⓢ CONCRETE PAVEMENT FOR DRIVEWAYS
 - Ⓣ 5 FT. CONCRETE SIDEWALK (4 IN.)
 - Ⓤ 8 FT. HMA PATH
 - ⓖ CONCRETE PAVEMENT—MAINLINE
 - ⓗ CURB RAMP G
 - Ⓨ CURB RAMP 0



FILED
 OCT 02 2002
 OFFICE OF HAMILTON COUNTY SURVEYOR

RECOMMENDED FOR APPROVAL: _____
 DESIGN ENGINEER: JEK DATE: _____
 DRAWN: JM
 CHECKED: SPH CHECKED: SPH

FISHERS
 116TH STREET LINE A INDIANA
 8450 WESTFIELD BLVD., SUITE 300
 HOSCHARTS, IN 46240
 317 713-4615
 FAX 317 713-4618

HORIZONTAL SCALE	FILE
1" = 20' 40"	3947
VERTICAL SCALE	DESIGNATION
1" = 10' 20"	
SURVEY BOOK	SHEET
	27 OF 135
CONTRACT	PROJECT

This copy is from the Digital Archive of the Hamilton County Surveyor's Office, Noblesville, IN, 46060

SPS NO. 3947.07